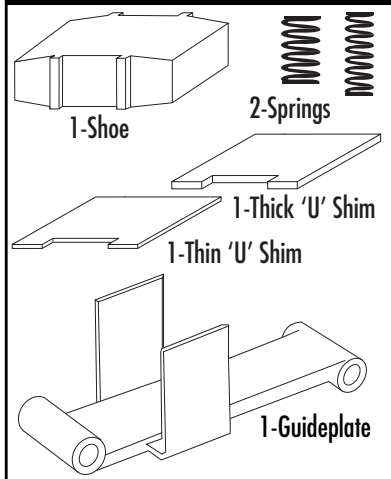


Congratulations on your purchase of the popular M6 Chain Tensioner for Harley Davidson Big Twin Motorcycles (07 - Up). Some of the benefits you'll expect with the M6 Chain Tensioner installed in your primary case are: automatically self-adjusts the tension on the primary chain, provides constant and even tension improving your transition in gear shifting, reduces shifting noise, and creates a much smoother ride, as well as extends the life of your primary chain.

*The M6 truly is, a performance product that performs!*

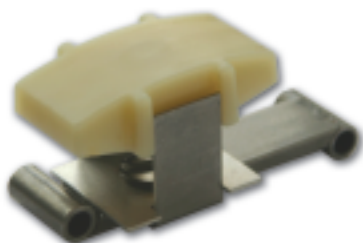
## FOR '07 - UP MODELS



## NOTES & EXCEPTIONS

- It is possible a new chain will reach the 1/2" adjustment without using any shims.
- It is recommended to use stock Harley Davidson primary fluid (or equivalent) in the primary case, due to excessive wear on our M6 nylon/plastic shoe using other fluids.
- When adding shims, always add the "thin" shim first, remeasure the spring compression, and add additional thickness as needed.

**Hayden Enterprises**  
336 Adams Circle. #101  
Corona, CA 92882  
**haydensm6.com**  
**(800) M6-IN-USA**  
out of USA, call  
951-371-0030  
fax 951-371-4033



*"Feel the difference"*

### STEP 1

Put your bike in neutral. Drain your oil and remove the engine's primary case cover.



### STEP 2

Remove the factory primary chain tensioner, along with both of the spacers on the back side. Keep the two stock bolts for installation of the M6.



### STEP 3

Place the smaller spring inside the larger spring and place them in the hole in the bottom of the shoe. With the smooth surface facing up on the SHOE, place the shoe and springs into the guideplate and slide it into place under the primary chain. (Installation note: It may be necessary to start on the clutch side of the primary case and slide the M6 forward, or to the center, and into final location.)



### STEP 4

Measure for the 1/2" from the *bottom of the SHOE to the top of the guideplate*. If this measurement is too loose, you will need to add a shim under the springs. Continue this process until the 1/2" measurement is reached. If you need more than the supplied shims, this may indicate that your primary chain is worn and should be replaced.



**NOTE: Never use washers in the SHOE or for any other use when installing the M6 Chain Tensioner.**

### STEP 5

Re-assemble the engine's primary case and add fluid as recommended by Harley Davidson. We suggest that you replace the gaskets, if necessary. Check the unit for wear every 20,000 miles depending on your riding style...and always use clean primary fluid.



**NOTE: At some point in time you will have chain 'stretch' and will need to add an additional shim. Save your extra shims and instruction sheet for future use. Please call us if you need replacements.**